

NGL125 / NGL150

Gas Burner

2083kW - 3924kW



NGL125/150 Gas Burner features:

- Energy saving and compatible with environmental requirements
- Quiet in operation
- Reliable and trouble-free
- Designed and approved in accordance with the European Standard EN 676
- Industry standard components easily available
- 2-stage or fully modulating operation (modulation optional extra)
- Prewired control panel and simple plug-in gas train facilitates the installation
- Fully closing air damper
- Fuel: LPG
- Optional extras
 - Air inlet silencer
 - Separate water level control (AOTC) panel
- All kW ratings are nett CV



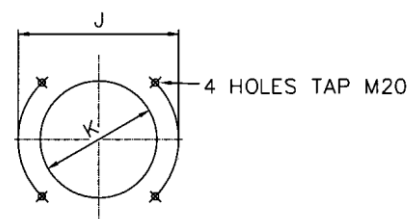
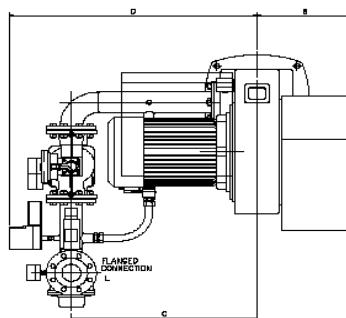
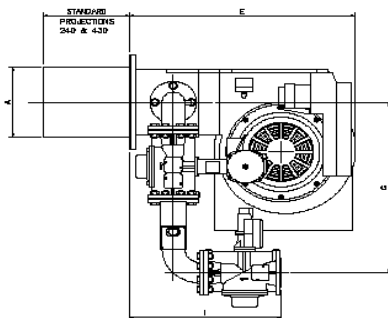
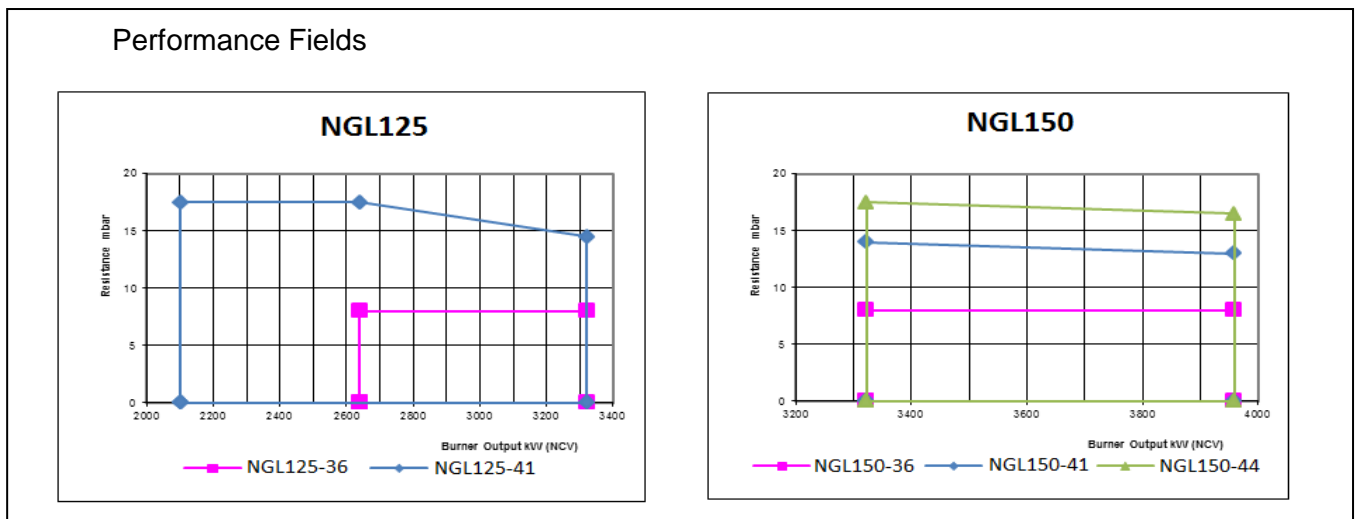
Enertech Group

For more information on all Nu-way products
please visit www.nu-way.co.uk

Burner Type		NGL125		NGL150		
Capacity	kW	2083-3293		3293-3924		
Fan Motor	V/ph/Hz	380-420/3/50		380-420/3/50		
	kW	125-36	125-41	150-36	150-41	150-44
Start Current	A/each phase	7.5	11	7.5	11	15
Run Current	A/each phase	57	72	57	72	92
Cable size	mm ²	15.6	22.8	15.6	22.8	29.7
Fuse	HRC (A)	4	6	4	6	10
Control unit		25	30	25	30	40
Operation Options		LFL1		LFL1		
Flame monitoring		2 Stage / Mod		2 Stage / Mod		
Air damper		UV Cell		UV Cell		
Max inlet gas pressure	mbar	Electric Actuator FCAD		Electric Actuator FCAD		
Noise @ 1m	dBA	300		300		
NOx*	mg/kWh	92	94	92	94	96
Gross weight	kg	<80		<80		
Volume	m ³	330		330		
		2.344		2.344		

Other electrical supply options available on request.

*Typical NOx level subject to combustion chamber design and site conditions.



Burner	A	B	C	D	E	F	G	H	I	J	K	L
NGL125-36 NGL125-41	310	400	710	1000	906	145	760	163	590	454	330	DN65 PN16
NGL150-36 NGL150-41 NGL150-44	310	400	740	1000	906	145	760	163	610	454	330	DN80 PN16

Enertech Limited, Ten Acres, Berry Hill Industrial Estate,
Droitwich Spa, Worcestershire, WR9 9AQ

tel: +44 (0) 1905 794331 • fax: +44 (0) 1905 794017
email: info@nu-way.co.uk • web: www.nu-way.co.uk



Enertech Group
23-10-2018