

# MOL 350 Oil Burner



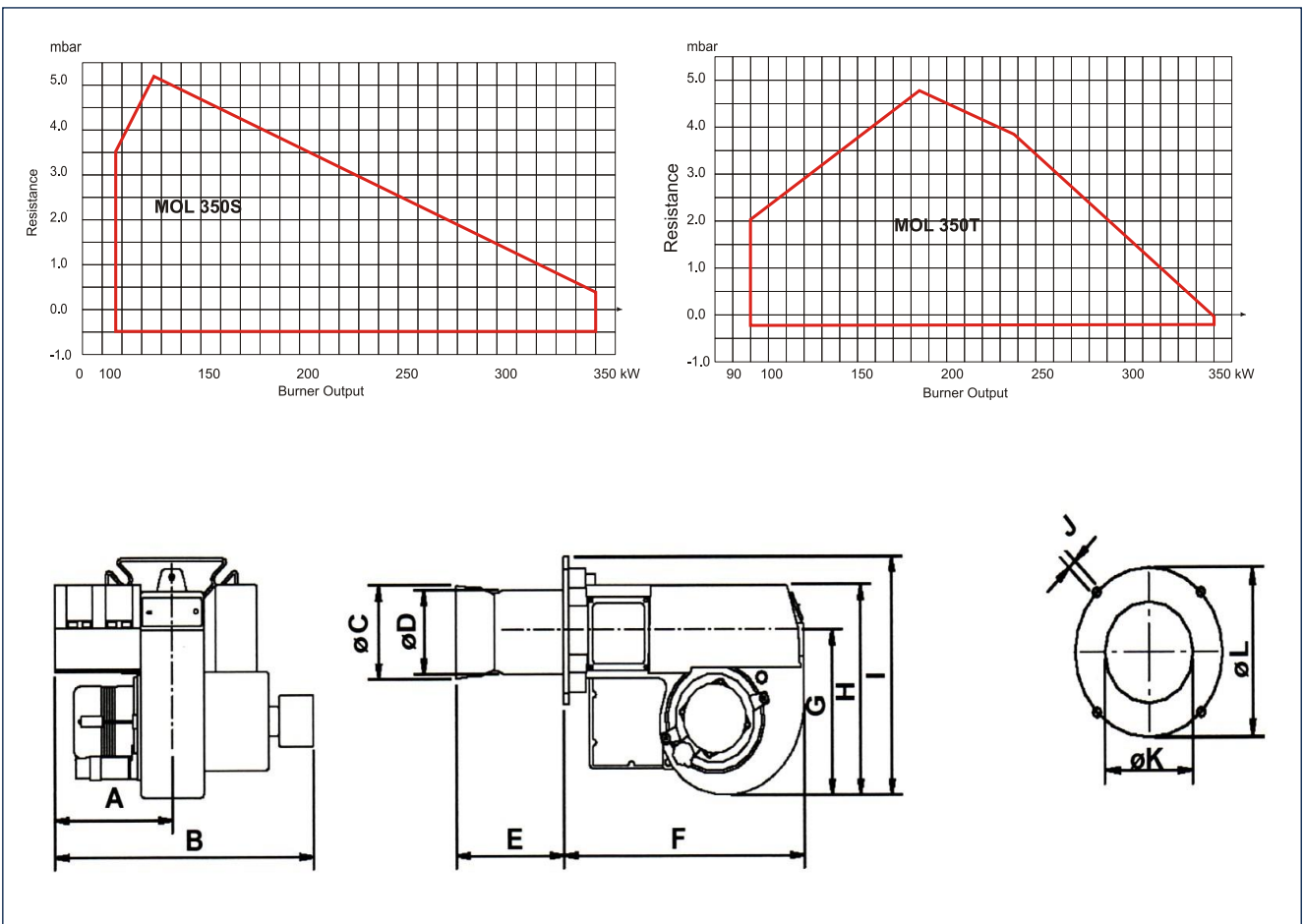
## **MOL 350 Oil Burner features:**

- Energy saving and compatible with environmental requirements
- Quiet in operation and designed for easy maintenance
- Reliable and trouble-free
- Designed and approved in accordance with the European Standard EN 267
- Suitable for high resistance boilers
- Industry standard components easily available
- Designed for on/off and high/low operation
- Plug-in contact facilitates the installation
- With hydraulic air adjustment
- Fuel – Light distillate oil Class D (1.5-5.5 cSt @ 40°C)
- All kW ratings are nett CV



For more information on all Nu-way products  
please visit [www.nu-way.co.uk](http://www.nu-way.co.uk)

Type		MOL 350 S1L	MOL 350 T1L
Capacity	kW	107-350	95-350
Motor	V/Hz	230/50	230/50
	kW / A (Fuse)	250 / 10	250 / 10
Start / Run Current	Amps	10.4 / 2.4	10.4 / 2.4
Control box		Landis & Staefa	Landis & Staefa
Fuel pump		Danfoss/Suntec	Danfoss/Suntec
2-Stage			•
Gross weight	kg	23	23
Volume	m <sup>3</sup>	0.11	0.11



Burner	A	B	øC	øD	E*	F	G	H	I	J	øK	L
MOL 350 S1L	195	400	126	114	172	420	260	310	360	M12	135	200-230
MOL 350 T1L	207	435	130	114	174	420	260	310	360	M12	135	200-230

\* Extended Lengths Available

**Enertech Limited**, Ten Acres, Berry Hill Industrial Estate,  
Droitwich Spa, Worcestershire, WR9 9AQ

tel: +44 (0) 1905 794331 • fax: +44 (0) 1905 794017  
email: info@nu-way.co.uk • web: www.nu-way.co.uk



**Enertech Group**

23-10-2018