

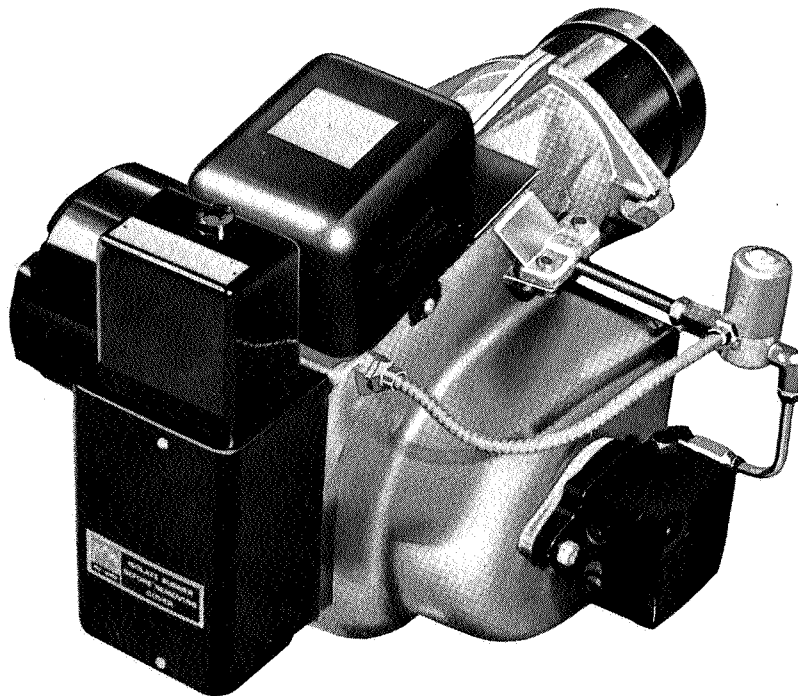
NU-WAY



Technical data

automatic oil burners

MODEL
ZL2D
ZL2D H/L



The Nu-way ZL2D burner has a maximum capacity of 1.16 million Btu/h (290,000 kcal/h, 370 kW) at balanced draught. This burner is available for either on/off or high/low/off operation. It is also able to fire, at reduced thermal output, appliances having resistance up to 0.4 in wg, (100 mm wg., 1.0 mbar).

FUEL

Light distillate oil to BS 2869:1970 class D (35 sec Redwood No. 1 at 100°F: 3.0 cSt at 38°C).

FUEL SYSTEM

Suitable for single pipe gravity or two pipe suction lift systems. Single nozzle for on/off : twin nozzles for high/low/off operation. Fuel filter with disposable element: fuel connection $\frac{1}{4}$ " BSP female thread.

CONSTRUCTION

Monobloc metric design using fasteners to ISO standards. Hinged transformer for easy access to fan and inner assembly.

AIR REGULATION

Adjustable damper for on/off operation; hydraulically actuated damper for high/low operation.

CONTROLS

Flame supervision by photo-electric cell with sequence controller which complies with BS799:1970 Part 3. The ZL2D burner may be controlled by suitable thermostats, time switches, frost stats, etc.

OPTIONAL EXTRAS

Additional or alternative controls are available to meet special specifications or requirements, at extra cost.

WEIGHT

23 kg, 50 lb. H/L : 25 kg, 55 lb.

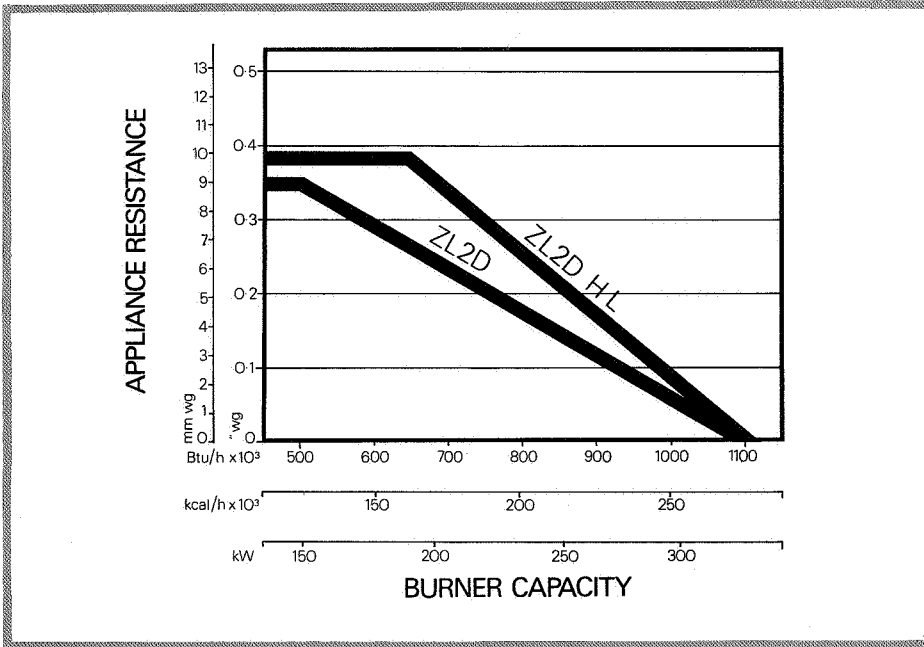
ELECTRICAL DATA

	1 phase	3 phase
Mains supply (V) $\pm 10\%$	230	415
Frequency (Hz)	50	50
Motor (W)	250	250
Motor (hp)	$\frac{1}{3}$	$\frac{1}{3}$
	2850 rev/min	2850 rev/min
	capacitor start	
Burner start current (A)	22	3.5
Burner run current (A)	2.4	0.75

Ignition by direct spark from 10 kV 23 mA transformer, centre tap earthed.



BURNER SELECTION



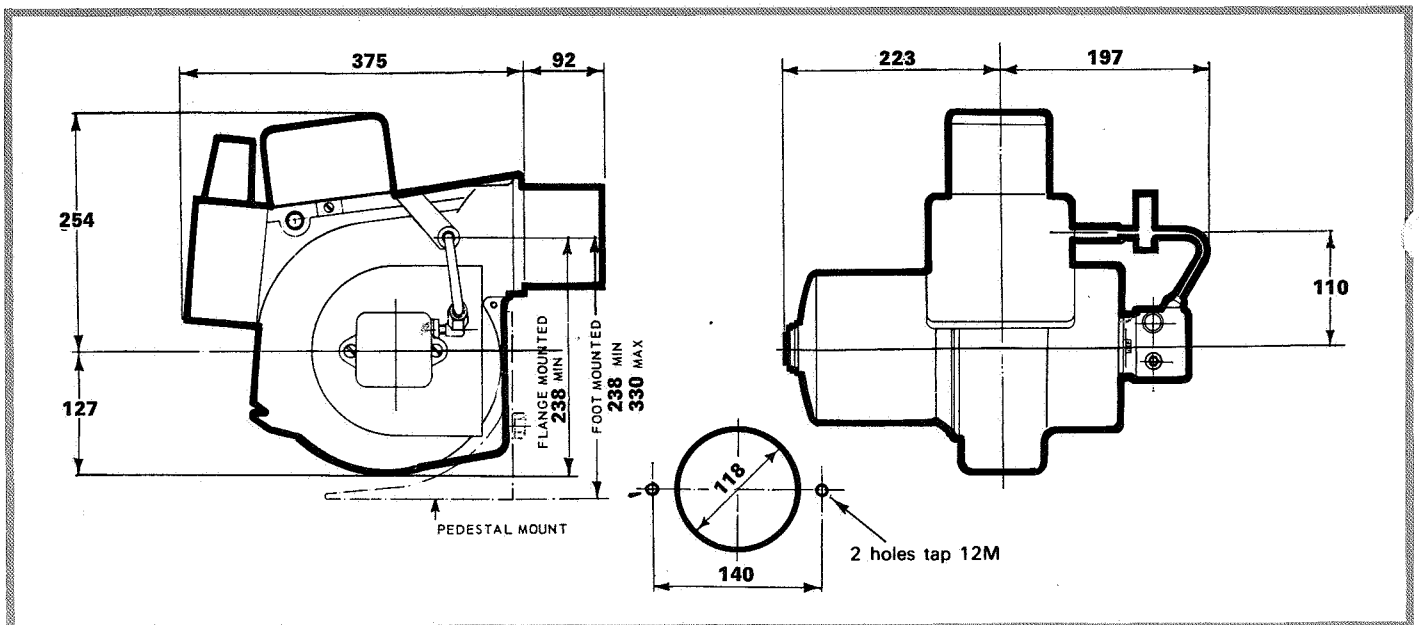
ORDERING INFORMATION

When ordering a Nu-way ZL2D burner, please specify the following information in order to expedite your order.

- Type of appliance with which burner is to be used.
- Rating of appliance.
- Specification of electricity supply locally available, ie voltage, frequency and whether single or three phase (3 or 4 wire).

This graph is a guide to burner selection only. For advice on individual applications please consult the Technical Department.

ORDERING INFORMATION



Nu-way Heating Plants Limited Droitwich, WR9 8NA, England

Telephone: Droitwich (09057) 2331 & 2527
Telex: 338551. Cables: JASNU DROITWICH

Nu-way policy is one of continuous improvement. The right to change prices and specifications without notice is reserved.

