

# MODELS XL2 & XL6

# *Nu-way* - STANDARD AUTOMATIC OIL BURNERS

Data  
Sheet  
No. B.3

## *Brief Specification*

### ATOMISATION

Pressure Jet.

### IGNITION

Electric Spark.

### CONTROL

On/Off (see overleaf).

### FUEL SUPPLY

Gravity or Suction Lift. See pump maker's instructions.

### ELECTRIC SUPPLY

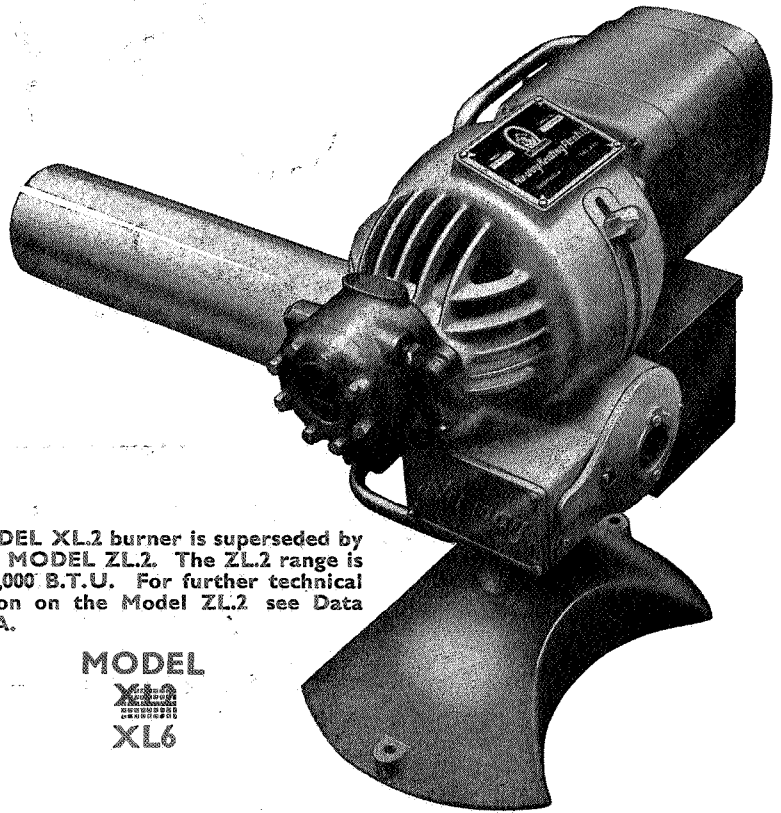
Single-phase A.C. standard D.C. or three-phase A.C. to order.

### FUEL PUMP

Sundstrand.

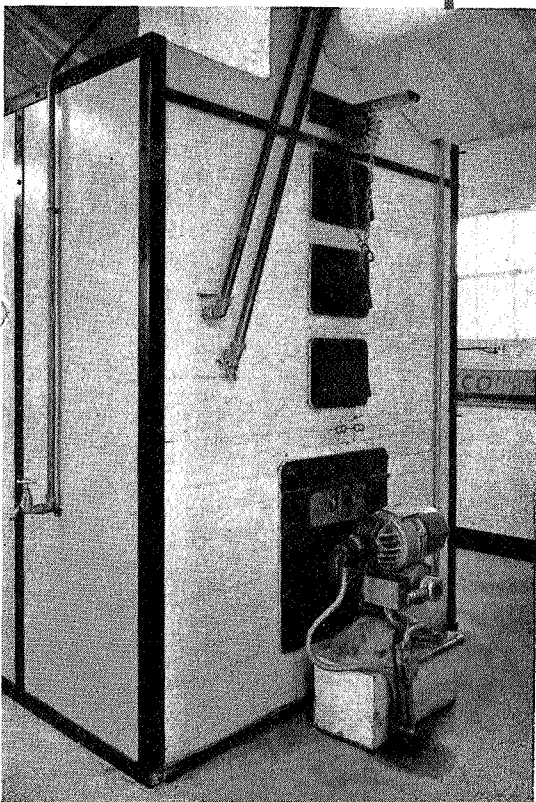
### MOUNTING

Pedestal as standard. Flange mounting optional.



THE MODEL XL2 burner is superseded by the NEW MODEL ZL2. The ZL2 range is 50,000-250,000 B.T.U. For further technical information on the Model ZL2 see Data Sheet D8A.

MODEL  
  
XL6



Steam Tube Peel Oven, 3-deck (8ft. x 4ft.) fired by Nu-way XL6 Automatic Oil Burner. Photograph by courtesy of the manufacturers, Messrs. J. A. Till & Co. Ltd., Brislington, Bristol 4.

## NU-WAY MODELS XL2 & XL6

are sturdy, reliable automatic pressure-jet burners of conventional design. They are particularly suitable for firing many smaller types of bakers' ovens as well as hot water and steam boilers.

Nu-way type XL oil burners provide clean, automatic heat at a cost competitive with solid fuels and far cheaper than other "automatic" fuels.

The unit requires no attention apart from routine cleaning and maintenance.

Spares and service are readily available in all parts of the country.

## SPECIAL FEATURES

### AIR CONTROL

On pressure side of fan for cleanliness and quiet running.

### SAFETY MICROSWITCH

Automatically disconnects high voltage when burner is opened for cleaning.

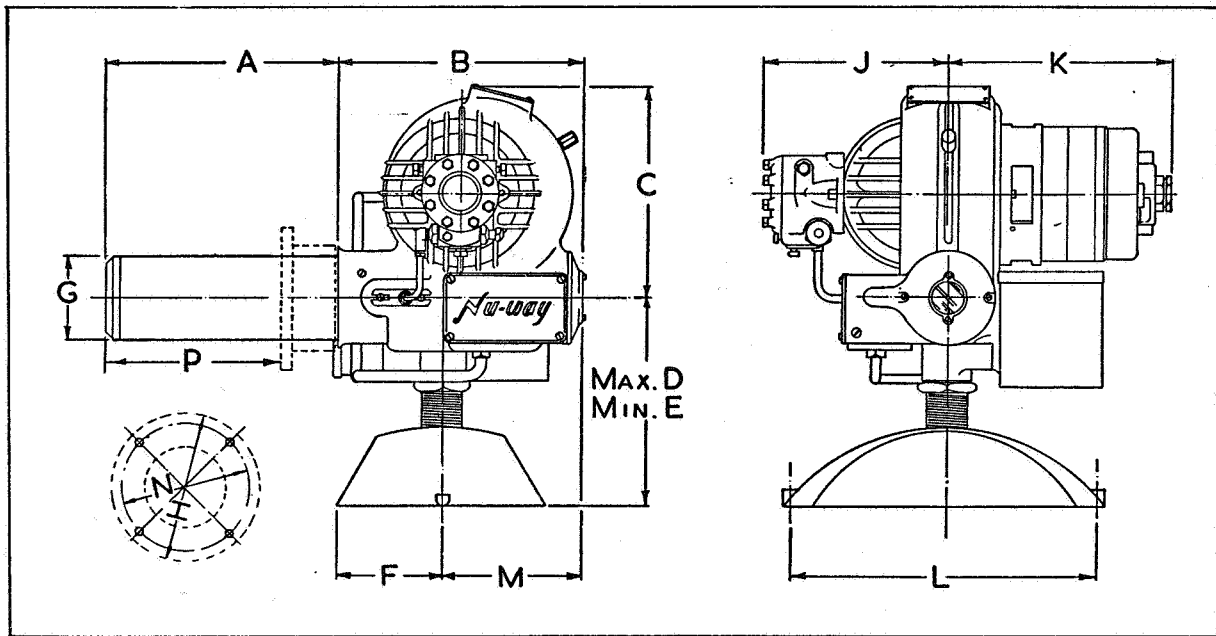
### H.T. BUS-BARS

Solid brass for positive safe ignition.

### BUILT-IN SUPPRESSOR

Combats radio and T.V. interference.

# Leading Dimensions



	A	B	C	D	E	F	G	H	J	K	L	M	N	P
<b>XL2</b>	14½" or 8½"	11"	8½"	9½"	7"	4⅞"	4⅞"	7"	8"	11"	13½"	6½"	6"	11½" or 6½"
<b>XL6</b>	14½" or 8½"	12"	10½"	10½"	7½"	4⅞"	5⅞"	8½"	7½"	10½"	13½"	6½"	7½"	14½" or 8½"

Approximate Gross Shipping Weight : XL2—105 lb.; XL6—115 lb.

		XL2		XL6	
<b>Rates of Firing</b>	Gallons/ Hour Imperial	Max.	1.66	5.00	
		Min.	0.63	1.67	
	Gallons/ Hour U.S.	Max.	2.00	6.00	
		Min.	0.75	2.00	
	Litres/ Hour	Max.	7.50	22.7	
		Min.	2.86	7.60	
<b>Boiler Ratings (Under Normal Loads)</b>	B.Th.U./ Hour	Max.	213,000	600,000	
		Min.	75,000	213,000	
	K. Cal/ Hour	Max.	53,200	150,000	
		Min.	18,500	53,200	
<b>Electrical Load on 230/1/50</b>	Motor, H.P.		1/6	1/6	
	Running Current (amp.)		1.7	1.7	
	Max. Current (amp.)		13.5	13.5	

## FUEL

Models XL2 and XL6 are designed to burn distillate oils of a viscosity not exceeding 43 seconds Redwood No. 1 at 100° F. This is equivalent to 1½° Engler, 48 seconds Saybolt Universal and 6.5 Centistokes, all at 100° F. or 38° C.

## AUTOMATIC CONTROLS

### (1) Flame Safeguard

The burner is designed to operate with controls which ignite and run the burner only when it is wanted. Full safety devices are incorporated together with re-cycling and lock-out features. Electric ignition is switched on a few seconds before the burner motor starts and is automatically switched off when a stable flame is established. On flame failure the ignition is immediately restored and restarting attempted. Should it fail to ignite then it locks out and lights a warning lamp. If the electric supply fails the burner shuts down but is restarted automatically when it is restored. These controls take the form of a wall-mounted panel and a flue switch, a combined flue switch control unit or a burner-mounted electronic control unit with photo-cell flame-guard.

### (2) Temperature/Time

The operation of the burner may be controlled by any suitable thermostat or pressure switch and its periods of operation can be regulated with the normal forms of time switch.

*Nu-way Policy is one of continuous improvement. The right to change prices or specifications at any time without notice is reserved.*



MANUFACTURED BY

**NU-WAY HEATING PLANTS LTD.,**  
Droitwich, England

Telephone: DROITWICH 220

