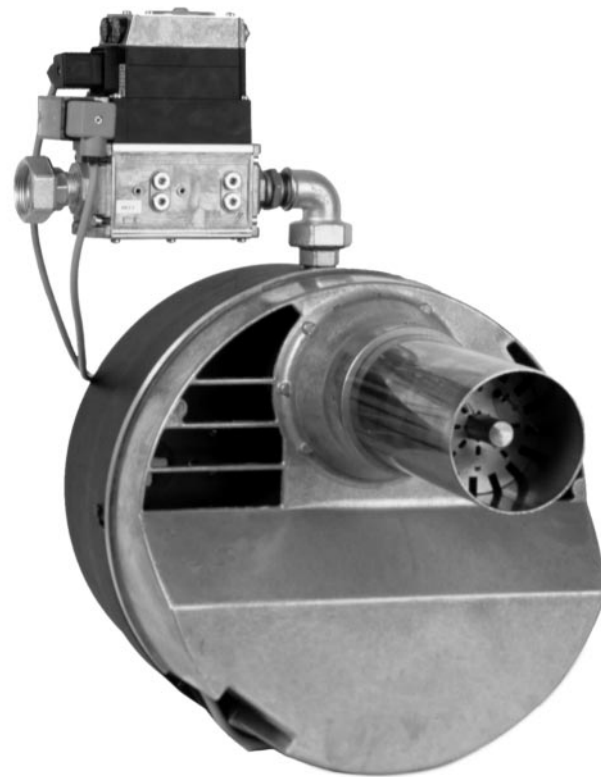


# R Series Gas Burners:

RG 40  
RG 60  
RG 120  
RG 260



R

R SERIES – GAS BURNERS



Output  
Based Upon  
Gross CV  
of Fuel

## Engineering Standards

A high quality construction designed to meet all European and relevant standards plus performance requirements.

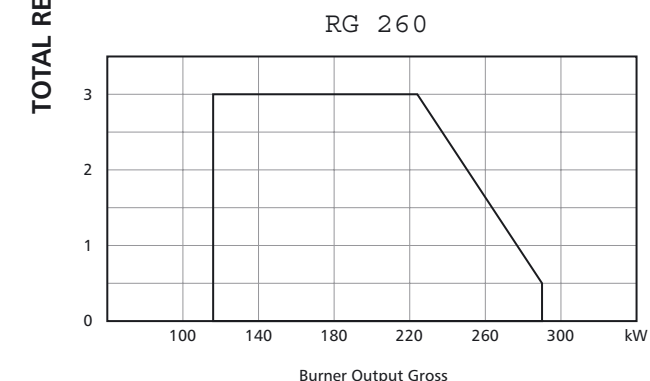
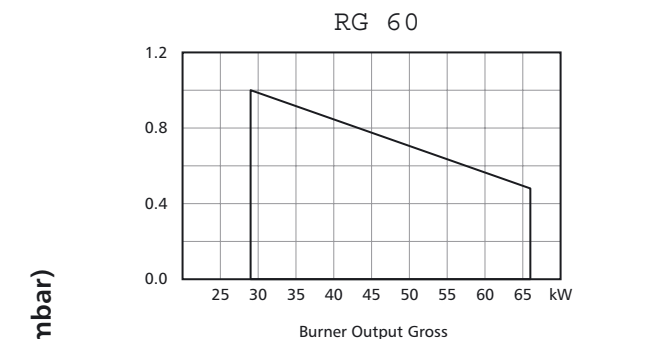
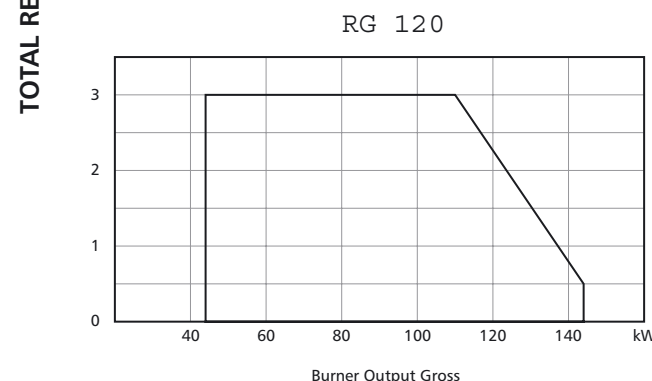
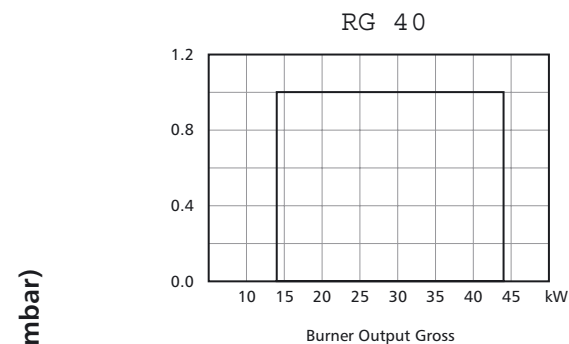
The burner head is manufactured to a high specification and designed to give optimum combustion firing conditions and efficiency to suit all types of heating appliances. The adjustable flame tube projection provides the installer with the facility to set the mounting flange and firing position to suit the appliance.

## Operational modes

RG 40 – On/Off  
RG 60 – On/Off  
RG 120 – On/Off, High/Low  
RG 260 – On/Off, High/Low

## RG Series

- 🔥 Output range 13–288 kW
- 🔥 Natural Gas and LPG models
- 🔥 CE approved to EN 676
- 🔥 High efficiency performance
- 🔥 Ease of access for maintenance
- 🔥 Compact modern design
- 🔥 Adjustable flame tube projection
- 🔥 Low NOx models available
- 🔥 Single and two stage operation



## Typical Burner Designation

RG 120 T 1 S 70 - 165 F

Series —————

Burner Output (nett) kW —————

S = On/Off

T = High/Low —————

1 = Single (ph) —————

S = Satronic Control —————

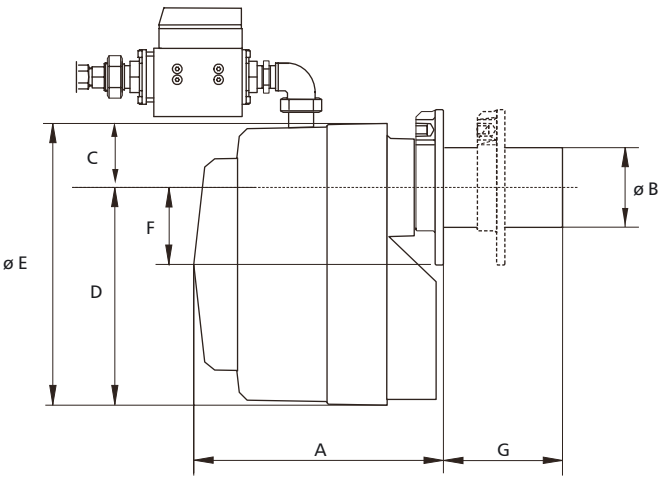
Min projection (mm) —————

Max projection (mm) —————

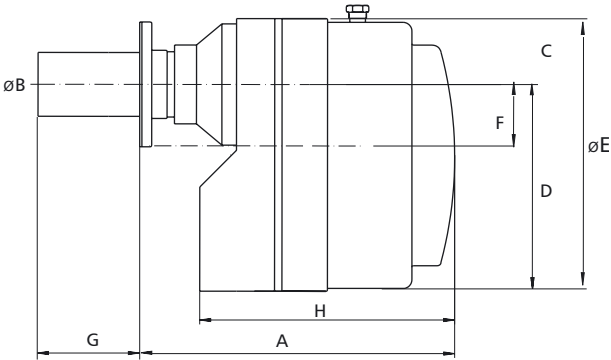
SS = Fully closing air damper (if fitted) —————

# RG Series Output

Burner Model	Gross Burner Output
RG 40	13–44 kW
RG 60	28–66 kW
RG 120	44–133 kW
RG 260	116–288 kW



RG 40 & 60 – Side Elevation

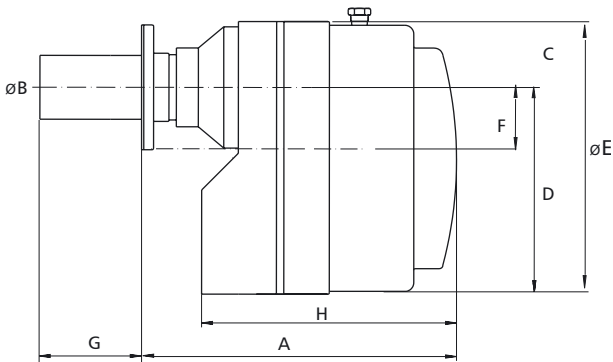


RG 120 – Side Elevation

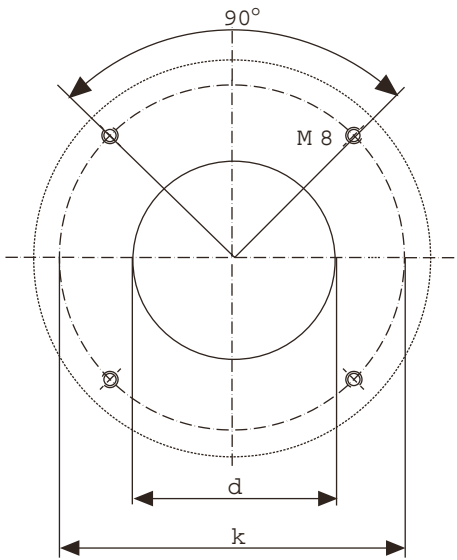
# RG Series Burner Dimensions

(all measurements  
are in mm)

Burner Model	A	ØB	C	D	ØE	F	G	H
RG 40/60	293–353	87	88	228	316	70	70–130	275
RG 120	392–452	100	85	292	377	103	70–165	344
RG 260	405–500	129	104	340	444	118	130–190	368



RG 260 – Side Elevation



Mounting-Flange Dimensions:

	d	k
RG 40/60	88	150
RG 120	102	140–180
RG 260	130	170–200