

## TECHNICAL DATA

# FORCED DRAUGHT OIL, GAS AND DUAL FUEL BURNERS

**MODEL  
SWIRLAMISER  
CS**

### BURNER CAPACITIES

Q2 or Q6/CS10

250,000 BTU/hr = 73 kW

Q2 or Q6/CS15

500,000 BTU/hr = 145 kW

Q2 or Q6/CS20

1,000,000 BTU/hr = 293 kW

Q2 or Q6/CS35

2,000,000 BTU/hr = 586 kW

Q2 or Q6/CS40

4,000,000 BTU/hr = 1172 kW

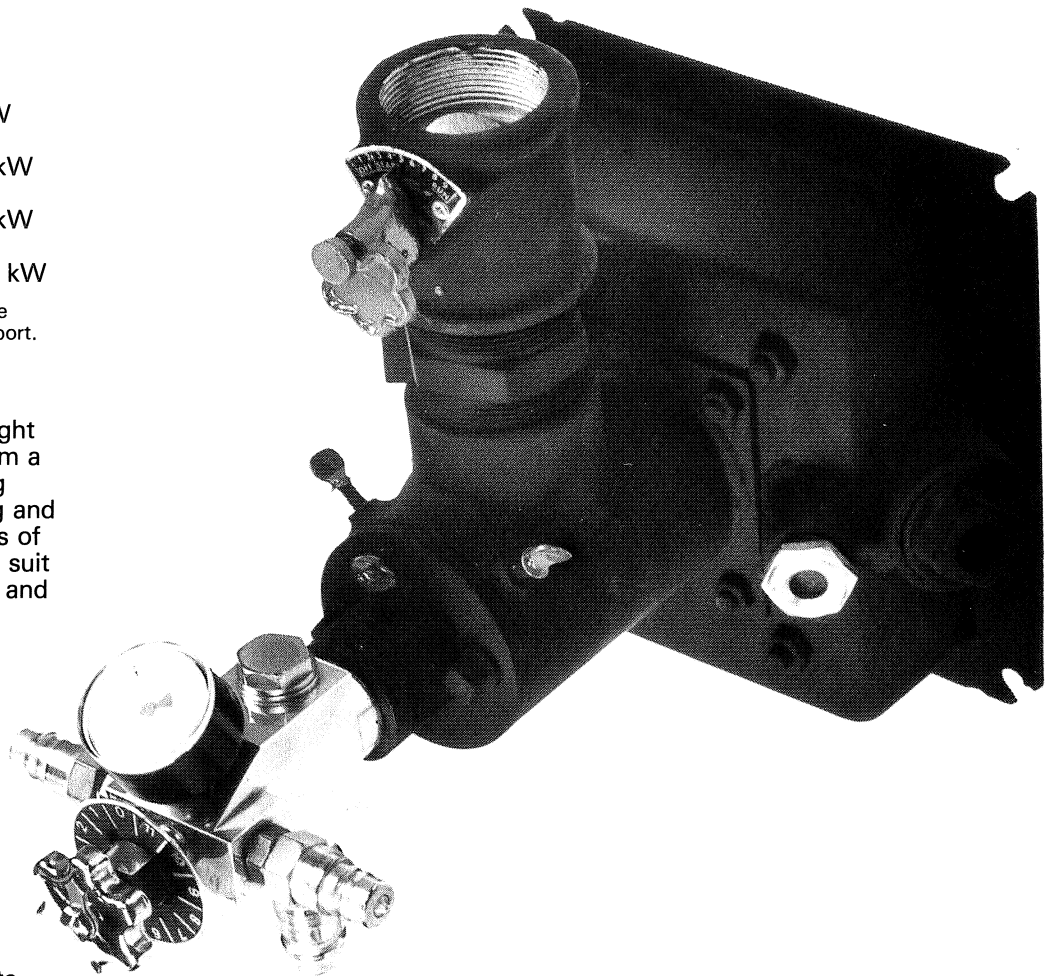
Types Q2 & Q6/CS40 have separate metering valves and no circulation port.

### SWIRLAMISER TYPE CS (Q2 & Q6)

The Swirlamiser forced draught burner system is built up from a series of modules comprising burner lance, burner housing and burner quarl. Various designs of each module are available to suit the application requirements and the type of fuel.

### BURNER LANCES

For liquid fuel firing a lance design based on the original and long established Swirlamiser natural draught medium pressure air oil burner is used (Fig. 1 & 3). Incorporated in the body of the burner is an oil metering valve and a pressure gauge. Facility is built in to provide continuous circulation of oil through the body to eliminate cold "dead legs" when firing on pre-heated residual oils. Suitable for all grades of oil fuel, waste oils and coal tar fuel. A supply of air or steam at 3-15 psi is required for atomisation. For gas firing a lance of the nozzle mix design is provided (Fig. 2). The lance is fully interchangeable with the oil lance of similar capacity providing facility for oil/gas twin fuel applications. The nozzle aperture is adjustable to suit a wide range of gas pressures and types including natural gas, propane, butane and towns gas. A gas pressure test point is provided.



### BURNER HOUSINGS

Type Q6 and Q2 housing are available for the mounting of oil or gas lances.

Type Q6 housings provide facilities for the fitting of manual or automatic igniter equipment and flame monitoring equipment (see Fig. 1).

Type Q2 housings are available for manually operated applications and lend themselves to use with elongated CS burners made to any length (see Fig. 3).

### BURNER QUARLS

The quarl design provides intimate mixing and stable combustion over a wide turn down range. A unique feature is the facility to extend the quarl to provide high velocity combustion for high and low temperature applications.

# MODEL

## SWIRLAMISER CS

A special variation on the CS burner, for use when firing vertically upwards, or horizontally, parallel to the centre line of a tunnel kiln, with or without a muffle. Available in sizes up to and including CS20.

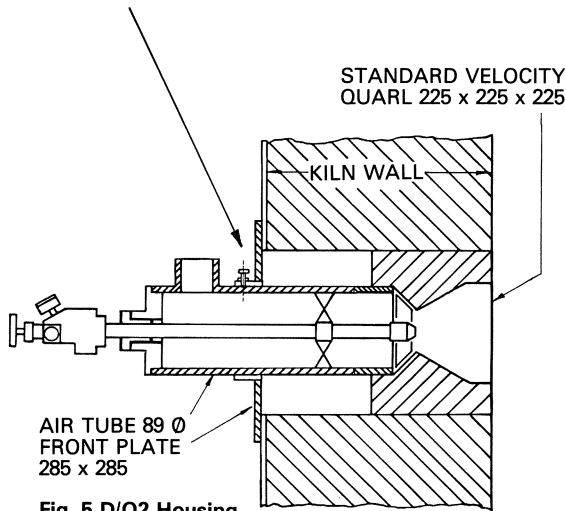


Fig. 5 D/Q2 Housing

### GENERAL ARRANGEMENT OF Q6 & Q2 ASSEMBLIES; WITH ALTERNATIVE LANCES AND QUARLS

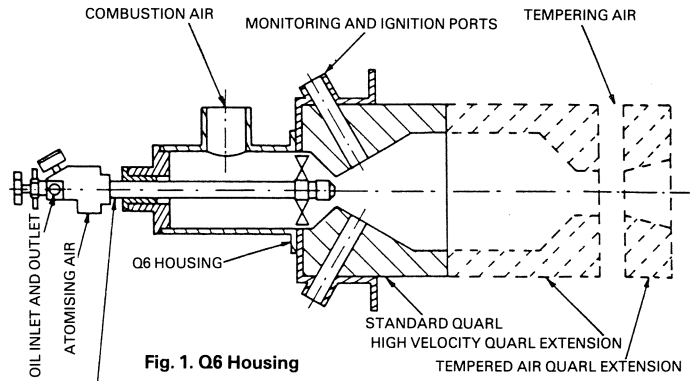


Fig. 1 Q6 Housing

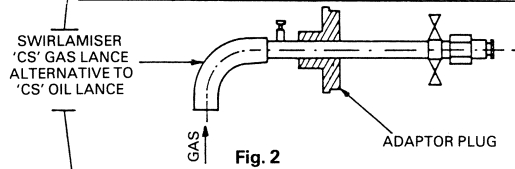


Fig. 2

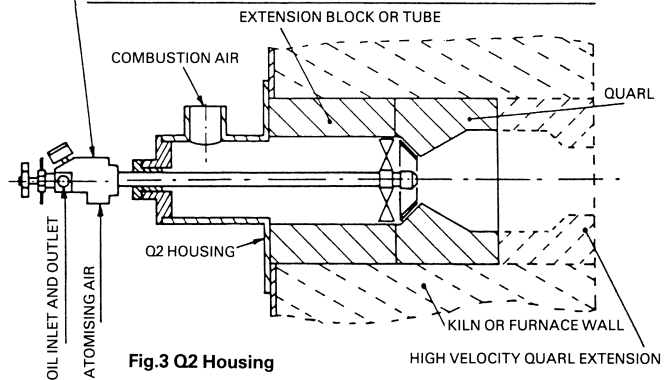


Fig.3 Q2 Housing

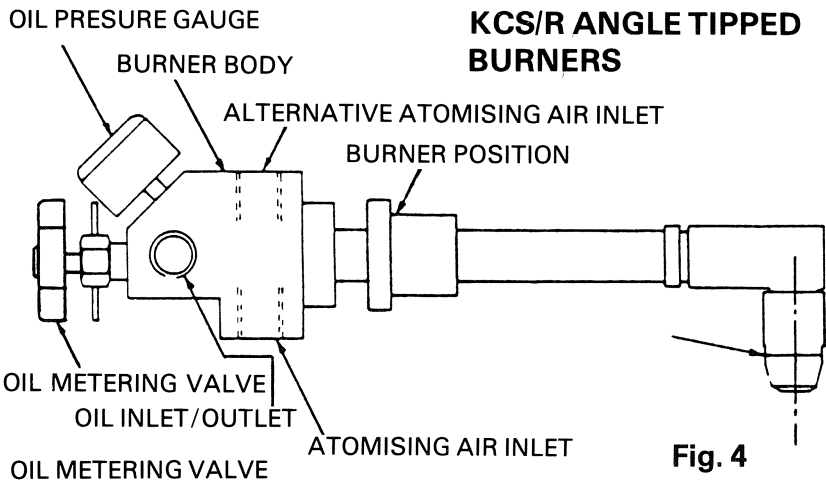


Fig. 4

### KCS/R ANGLE TIPPED BURNERS

A special variation on the CS burner, for use when firing vertically upwards, or horizontally, parallel to the centre line of a tunnel kiln, with or without a muffle. Available in sizes up to and including CS20.



Nu-way Limited, P.O. Box 1 Vines Lane, Droitwich, Worcestershire. WR9 8NA, England.

Tel: Droitwich (01905) 794242 (Direct Dial) & 794331

Facsimile: (01905) 794017 & Spares (01905) 795829

Email: info@nu-way.co.uk

*Nu-way policy is one of continuous improvement. The right to change prices and specifications without notice is reserved.*



BS EN ISO 9001  
CERT No. FM00921

ISSUE 11/98