

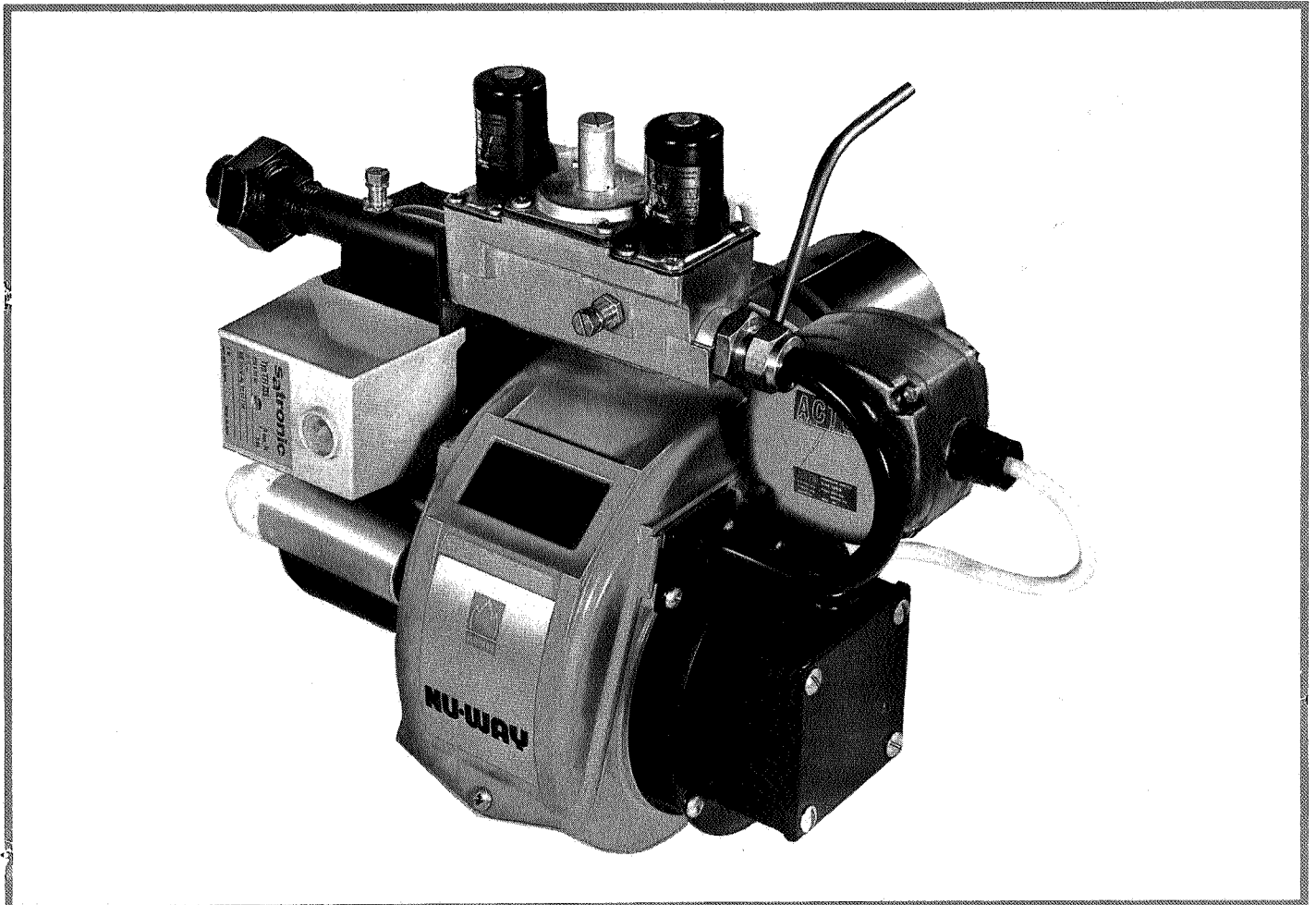
NU-WAY



Technical data

automatic gas burners

MODEL
CG1



The Nu-way CG1 blown gas burner is designed for automatic operation with burner capacities of 0.91, 1.13 and 1.37 therm/h (27, 33 and 40 kW, 23 000, 28 000 and 35 000 kcal/h) against balanced draught conditions. Available for on/off operation only, with direct spark and low flame start.

FUEL

Available in versions to burn both natural and LPG (Liquid Petroleum Gas). A town's gas version is available for export only; details upon request.

FUEL SYSTEM

The gas line includes a one-piece unit, which comprises a low gas flame start valve, a gas governor and a high flame gas valve. A $\frac{1}{4}$ -turn stop valve is supplied, loose, as a main shut-off valve.

CONSTRUCTION

A monobloc metric design, using fastenings to ISO standards, suitable for flange mounting. The burner is fixed to the mounting flange by a single screw, this enables the burner to be easily removed for servicing. The fan and inner assembly are accessible by removing the cover plate.

AIR REGULATION

None. (Fixed air setting).

CONTROLS

Flame supervision by ionization probe with sequence controller. The CG1 burner may be controlled by suitable thermostats, time switches, frost-stats, etc. A factory set air differential switch (with an air probe fitted either in the boiler front plate, or in the base of the stack), gives protection if combustion air is, or becomes, insufficient. Note: the differential switch is an optional extra on export models.

WEIGHT

16 kg 22 lb.

ELECTRICAL DATA

Mains supply (V) 230 +10%—15%
1 ph 50Hz
Burner motor (W) 75
(hp) 1/10
2700 rev/min, capacitor start.

Burner start current (A) 1.0
Burner run current (A) 0.6
Ignition by direct spark from double-wound and suppressed transformer secondary
5kV-18mA, earth return.



NU-WAY

BURNER SELECTION.

Burner model	Burner capacities				Main gas governor settings. Nat. gas	
	therm/h	Btu/h x 10 ³	kW	kcal/h x 10 ³	"wg	mm wg
CG1A	0.91	91	27	23	2.8	71
CG1B	1.13	113	33	28	2.1	53
CG1C	1.37	137	40	35	2.9	74

ORDERING INFORMATION

When ordering a Nu-way model CG1 burner please provide the following information to expedite your order.

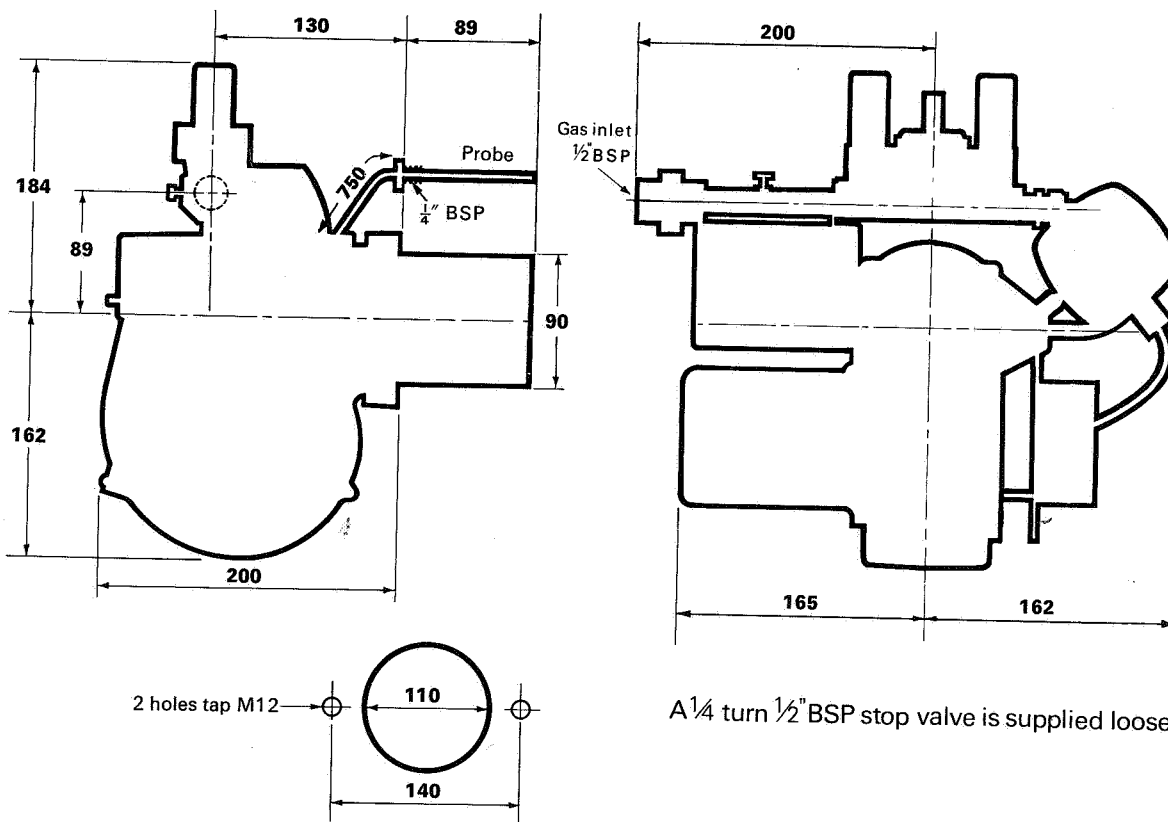
Type of appliance with which the burner is to be used.

Appliance rating.

Specification of electrical supply locally available, i.e. voltage and frequency.

Type of gas, and pressure available.

DIMENSIONS



Nu-way Heating Plants Limited Droitwich WR9 8NA, England

Telephone: Droitwich (09057) 2331 & 2527
Telex: 338551 Cables: JASNU DROITWICH

Nu-way policy is one of continuous improvement. The right to change prices and specifications without notice is reserved.

