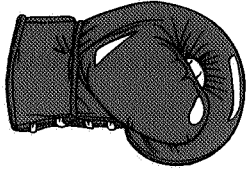


Handbook



BOXER

series high efficiency
oil burners

BURNER CAPACITY

Boxer A

14.7kW to 18.3 kW
50,000 Btu/h to 62,500 Btu/h

Boxer B

18.3kW to 25.6kW
62,500 Btu/h to 87,500 Btu/h

Boxer C

24.9kW to 33.0kW
85,000 Btu/h to 112,500 Btu/h

THE BOXER RANGE

Nu-Way's Boxer range of pressure jet oil burners sets new standards in efficient and reliable operation. Developed to meet the stringent standards of BS.4876 for domestic oil fired boilers and all popular types of oil fired domestic hot water boilers.

The burners are the result of over 50 years experience and development by Nu-Way in the light commercial market.

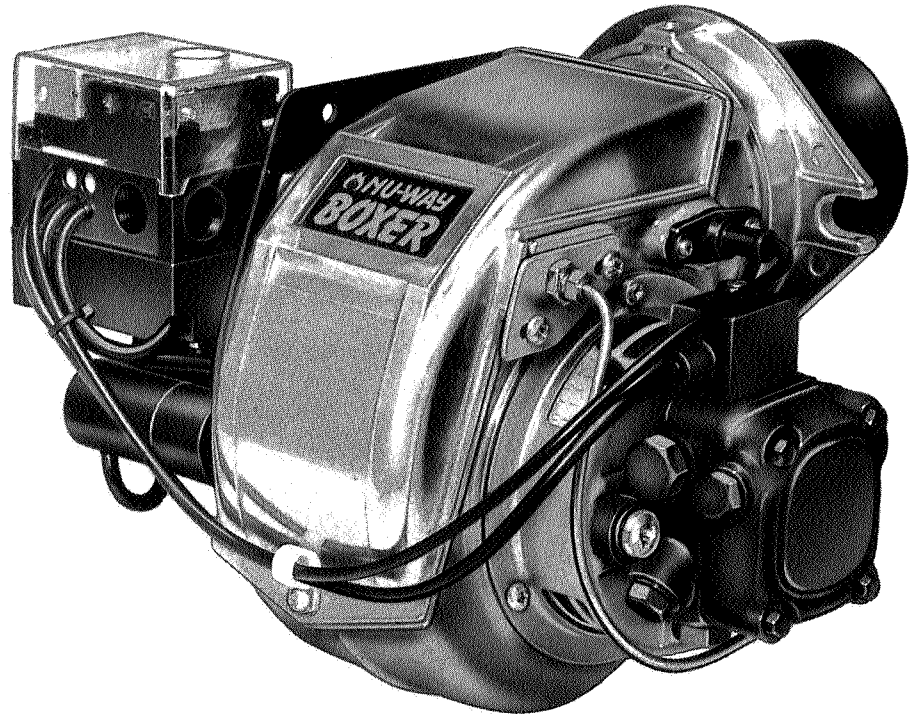
CONSTRUCTION

A monobloc metric design, using fastenings to ISO Standards. The burner is suitable for flange mounting to the boiler/heater frontplate.

The burner head is a new design based on the successful Nu-Way 'FR' head producing very high levels of combustion performance, together with tight flame patterns. The fan and inner assembly are accessible by removing the burner lid, ensuring ease and speed of servicing.

AIR REGULATION

Air for combustion can be adjusted to give maximum efficiency. A patented air inlet control device is fitted to ensure smooth start conditions. High static air pressure is maintained within the burner and enhances smooth ignition during boiler start up.



CONTROLS

Flame supervision by miniature photo electric cell with sequence controller. The burner on/off operation may be controlled by thermostats, time switches etc.

OPERATION

Single Stage (On/Off) operation only.

FUEL

Class C2 (1.1 - 2.0cSt @ 40°C)
Kerosene or Class D (1.5 - 5.5 cSt @ 40°C) Light Gas Oil.
Burner outputs based upon a Gross CV of 45.5 MJ/Kg.

FUEL SYSTEM

Pump fitted with solenoid cut-off valve, suitable for single pipe gravity feed or two pipe suction lift systems. A flexible oil pipe is provided, fuel connection 1/4" BSP. It is recommended that an in-line fuel filter should always be fitted.

APPROX. WEIGHT

10 kg

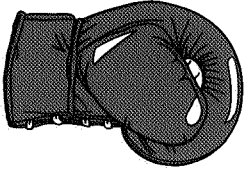
EXTRAS

Burner Cover
In-Line Fuel Filter



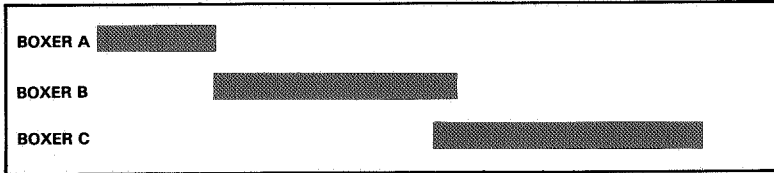
MODEL

BOXER



BURNER SELECTION CHART

10	12.5	15	17.5	20	22.5	25	27.5	30	kcal/h x 10 ³
11.7	14.7	17.5	20.5	23.5	26.4	29.3	32.3	35.2	kW
40	50	60	70	80	90	100	110	120	Btu/h x 10 ³



BURNER OUTPUT

Burner outputs shown are based upon an air temperature of 20°C and an altitude of 500m.

ELECTRICAL DATA

Mains Supply (V) 230/250 + 10%-15%
Single phase

Frequency (Hz) 50

Burner (W) 75 (1/10 hp)
2700 rpm

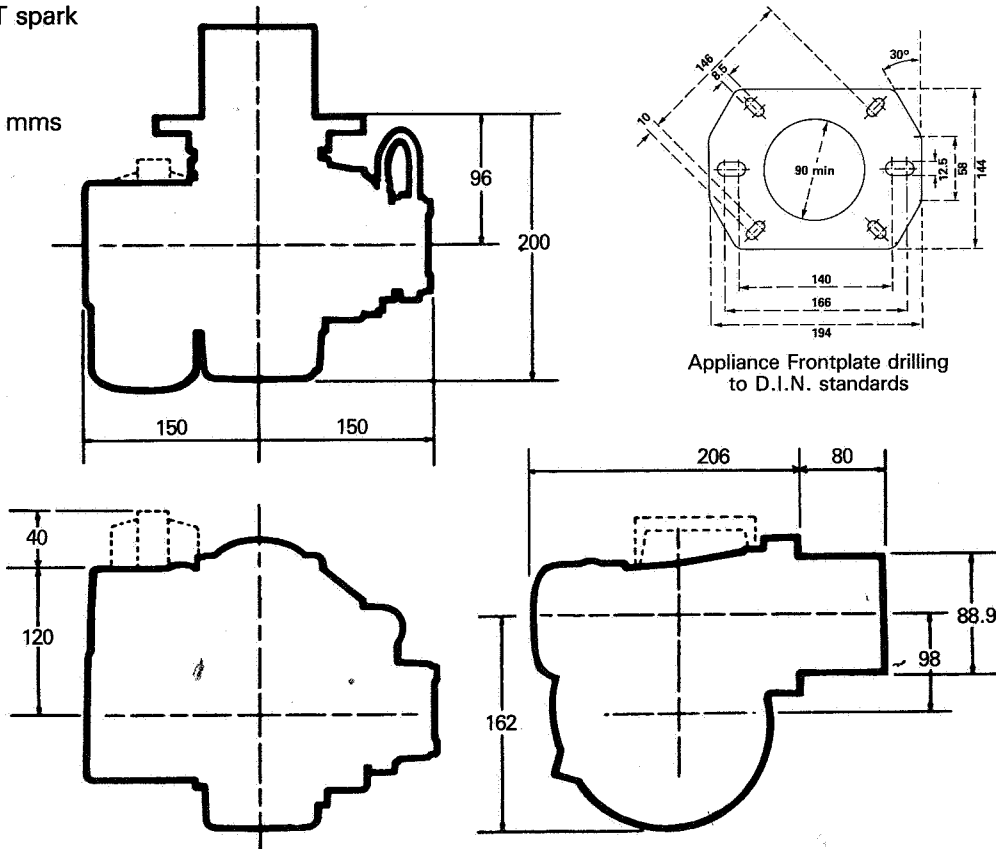
Start Current (A) 1.0 Capacitor start

Run Current (A) 0.6

Ignition by direct HT spark

DIMENSIONS

All dimensions are in mm



Nu-way Limited, P.O. Box 1 Vines Lane, Droitwich,
Worcestershire. WR9 8NA, England.

Tel: Droitwich (01905) 794242 (Direct Dial) & 794331

Facsimile: (01905) 794017 & Spares (01905) 795829

Email: info@nu-way.co.uk

Nu-way policy is one of continuous improvement. The right to change prices and specifications without notice is reserved.



BS EN ISO 9001
CERT No. FM00921

ISSUE 2/99