

# NOG180

## Heavy Oil Burner

### 1600kW - 4870kW



#### NOG180 Heavy Oil Burner features:

- Burner mounted control panel
- 2 stage control (high/low)
- NOG - Class 'G' oil 40 cSt @ 100°C
- Air damper: NOG - electric motor fully closing
- Oil Heater - Included with burner to heat oil for atomisation  
Separate pumping & heating unit for high/low control and for modulating control  
(Intermittent operation on NOG during standby to maintain oil temperature for immediate restart)
- All burners require a pre-heated ringmain oil supply, minimum temperature @ 83°C for Class 'G' oil.
- All kW ratings are nett CV
- Quiet in operation and designed for easy maintenance
- Suitable for high resistance boilers
- Industry standard components easily available
- Optional Extras: Modulating control  
Air inlet silencer  
Acoustic cover (wheel-over)  
Water level control panel (AOTC)



For more information on all Nu-way products  
please visit [www.nu-way.co.uk](http://www.nu-way.co.uk)

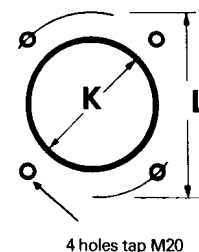
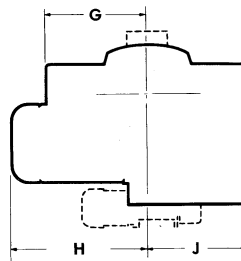
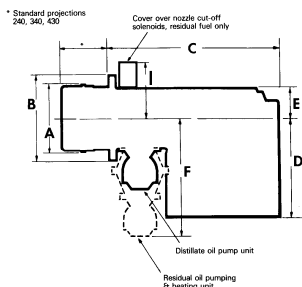
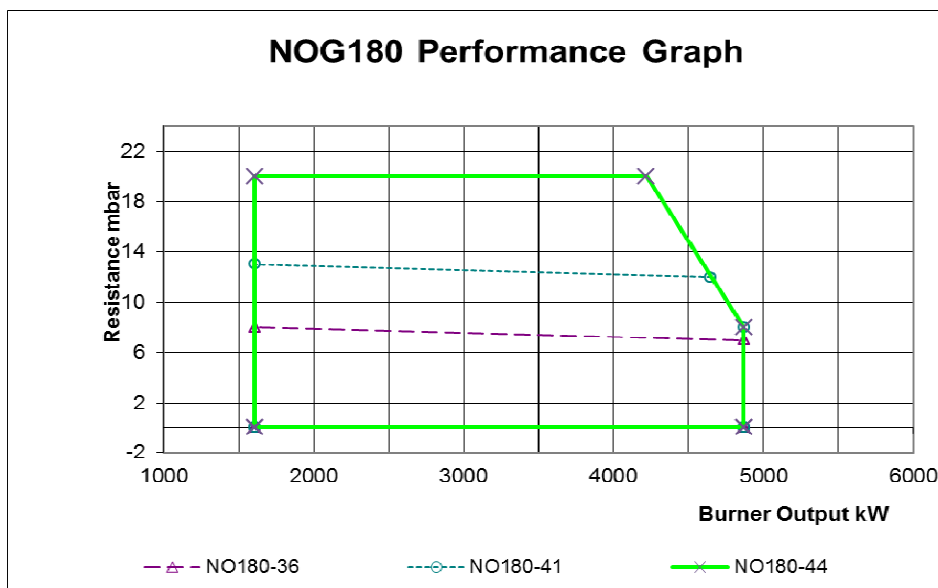


Enertech Group

Type	NOG180	
Capacity	kW	1600 - 4870
Motor	V/ph/Hz	380-420 / 3 / 50
	kW	15
Pre-Heater	kW	12
Start current	A/each phase	100
Run current	A/each phase	46.5
Cable size	mm <sup>2</sup>	16
Fuse		60
Control unit		LAL
Fuel pump		HP Technik
Oil Pump Motor	kW	0.75
Fuel connection	inch	0.75
Pressure gauge		50mm Dial (0-600 PSI)
Control options		2 Stage / Modulating
Noise @ 1m	dBA	92
Gross weight	kg	440
Volume	m <sup>3</sup>	150 x 100 x 90

• Standard  
Other electrical supply options available on request.

Note:  
All kW output  
rates based on  
nett CV



Burner	A	B	C	D	E	F	G	H	I	J	K	L PCD
NOG180-44	325	420	910	500	145	600	535	640	275	435	330	454

Enertech Limited, P O Box 1, Vines Lane  
Droitwich, Worcestershire, WR9 8NA

tel: +44 (0) 1905 794331 • fax: +44 (0) 1905 794017  
email: info@nu-way.co.uk • web: www.nu-way.co.uk



Enertech Group

Issue Sep 2012